

Software & Systems

DOS Command Window

Overview

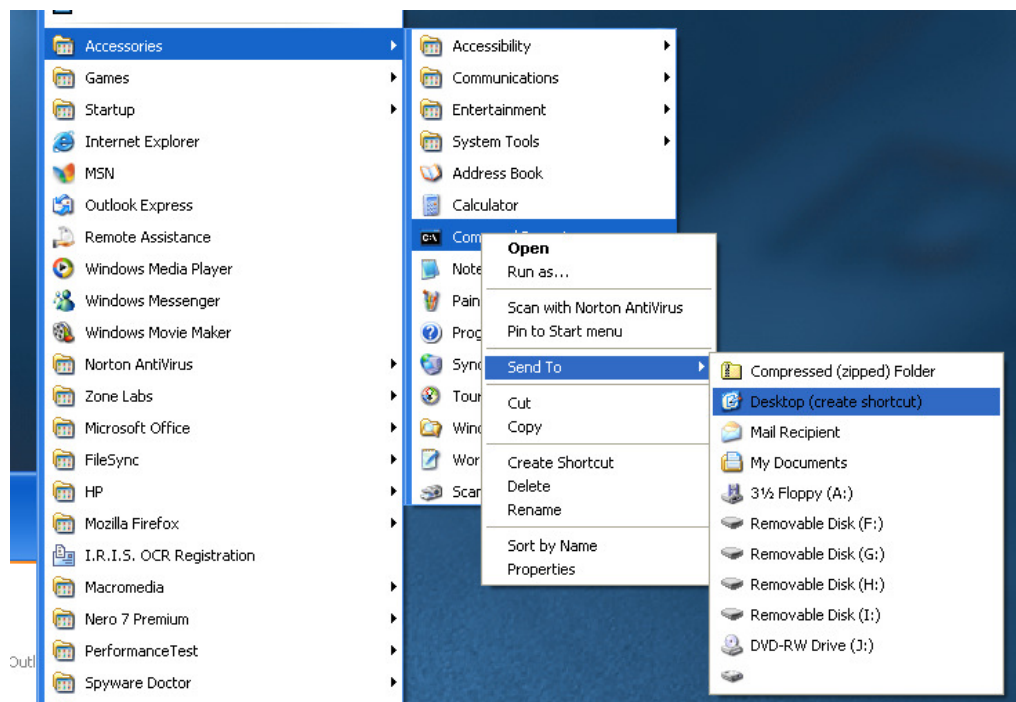
The DOS Command Window is sometimes still the best way of achieving certain things today even though it has been replaced with Windows Explorer etc.

Unfortunately, as the name suggests, this is for Windows XP. The installation fails on Windows 7 with a compatibility error.

How to open a Command Window

On Win XP, the Command Window application can be started by

- 1) Start -> All Programs -> Accessories -> Command Prompt
- 2) Start -> Run
Then type "cmd" and press the Enter key
- 3) Creating a shortcut to the application on your desktop.
Start -> All Programs -> Accessories -> Command Prompt
Then at the Command Prompt, press the right mouse button and select Send To -> Desktop (create a shortcut).



Wrong Directory

Unfortunately, Windows does not know which directory to start in, so it always places you in the home directory of the person logged in.

C:\Documents and Settings\YourName>

It is possible to navigate to other directories using the CD (change directory) command, but it is not easy. The solution is one of Microsoft's Power Toys called *Open Command Window Here*.

Open Command Window Here

Microsoft has a collection of tools called Power Toys. The name is not very appropriate, as these are actually a collection of useful tools rather than toys. The tools can be found at the link below.

<http://www.microsoft.com/windowsxp/downloads/powertoys/xppowertoys.mspx>

One of the most useful tools is *Open Command Window Here*. After the program is installed, a Command Window can be opened in any directory by just right mouse clicking on the directory name in Windows Explorer.

